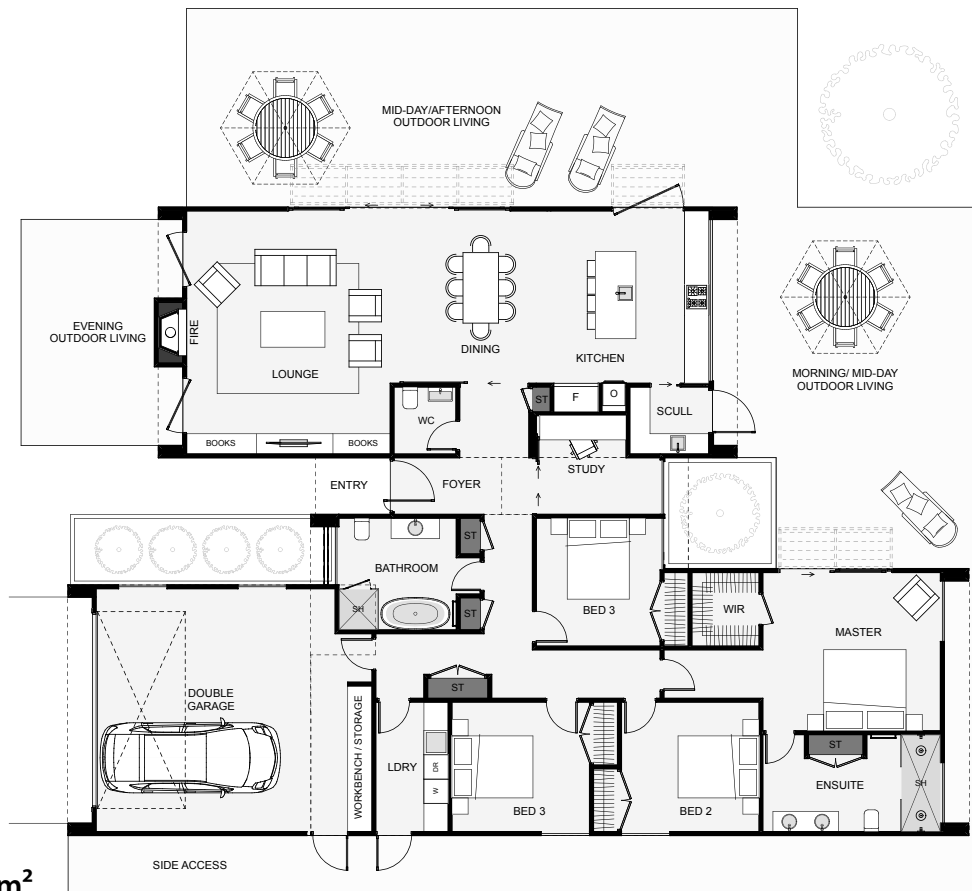




This modern four bedroom home has three core parts that make up its strong geometric frontage. When entering the foyer, a study slider can be opened so visitors can enjoy a view through full height glazing out to whatever centrepiece you desire. The dining takes in the morning sun from a large sliding window in the kitchen which drops right down to the bench level. Extra features include the scullery, a workbench within the garage and a large ensuite. If you're looking to build a bold home with a ton of features, this is it!



Floor Area: 240m²

 2
  4+
  2.5
  1
 22.2m 15.5m

Contact Glen:

Ph: 0274 626 101

E: info@glenarmstrongbuilders.co.nz

www.glenarmstrongbuilders.co.nz

